

Hex Combination Hose Nipples

Agriculture • Construction



Hex Combination Hose Nipples — STN Series (Plain Steel)

NPT Thread

Part Number	Size	Weight Each	Standard Carton	List Price Each
HEX-STN050	1/2"	0.14	25	
HEX-STN075	3/4"	0.22	25	
HEX-STN100	1"	0.32	50	
HEX-STN125	1 1/4"	0.50	20	

Hex Combination Hose Nipples — SPN Series (Plated Steel)

NPT Thread

Part Number	Size	Weight Each	Standard Carton	List Price Each
HEX-SPN050	1/2"	0.14	25	
HEX-SPN075	3/4"	0.20	25	
HEX-SPN100	1"	0.32	50	
HEX-SPN125	1 1/4"	0.56	20	

Combination Hose Nipples & Menders

Agriculture • Construction



STN Series



SPN Series

Combination Hose Nipples — STN Series (Plain Steel)

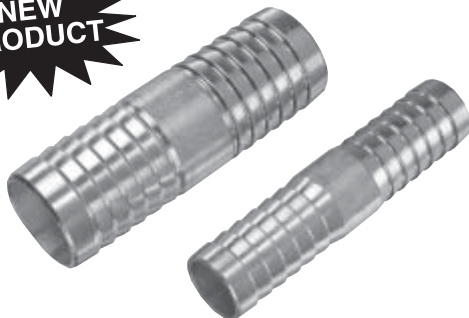
NPT Thread

Part Number	Size	Weight Each	Standard Carton	List Price Each
STN125	1 1/4"	0.50	20	
STN150	1 1/2"	0.70	10	
STN200	2"	1.04	40	
STN250	2 1/2"	1.16	20	
STN300	3"	2.18	12	
STN400	4"	3.22	8	
STN500	5"	4.12	4	
STN600	6"	12.18	4	

Combination Hose Nipples — SPN Series (Plated Steel)

NPT Thread

Part Number	Size	Weight Each	Standard Carton	List Price Each
SPN125	1 1/4"	0.56	20	
SPN150	1 1/2"	0.72	10	
SPN200	2"	1.10	40	
SPN250	2 1/2"	1.74	20	
SPN300	3"	2.14	12	
SPN400	4"	3.06	8	
SPN600	6"	12.24	4	
SPN800	8"	16.44	2	
SPN1000	10"	21.78	1	
SPN1200	12"	33.18	1	



Steel Hose Menders (Zinc Plated)

Part Number	Size	Weight Each	Standard Carton	List Price Each
SPHM050	1/2"	0.10	100	
SPHM062	5/8"	0.10	100	
SPHM075	3/4"	0.20	100	
SPHM100	1"	0.30	50	
SPHM125	1 1/4"	0.50	50	
SPHM150	1 1/2"	0.50	40	
SPHM200	2"	0.80	35	
SPHM250	2 1/2"	1.70	20	
SPHM300	3"	2.40	15	
SPHM400	4"	2.90	9	
SPHM600	6"	13.20	4	
SPHM800	8"	20.90	2	

All prices and specifications subject to change without notice.